

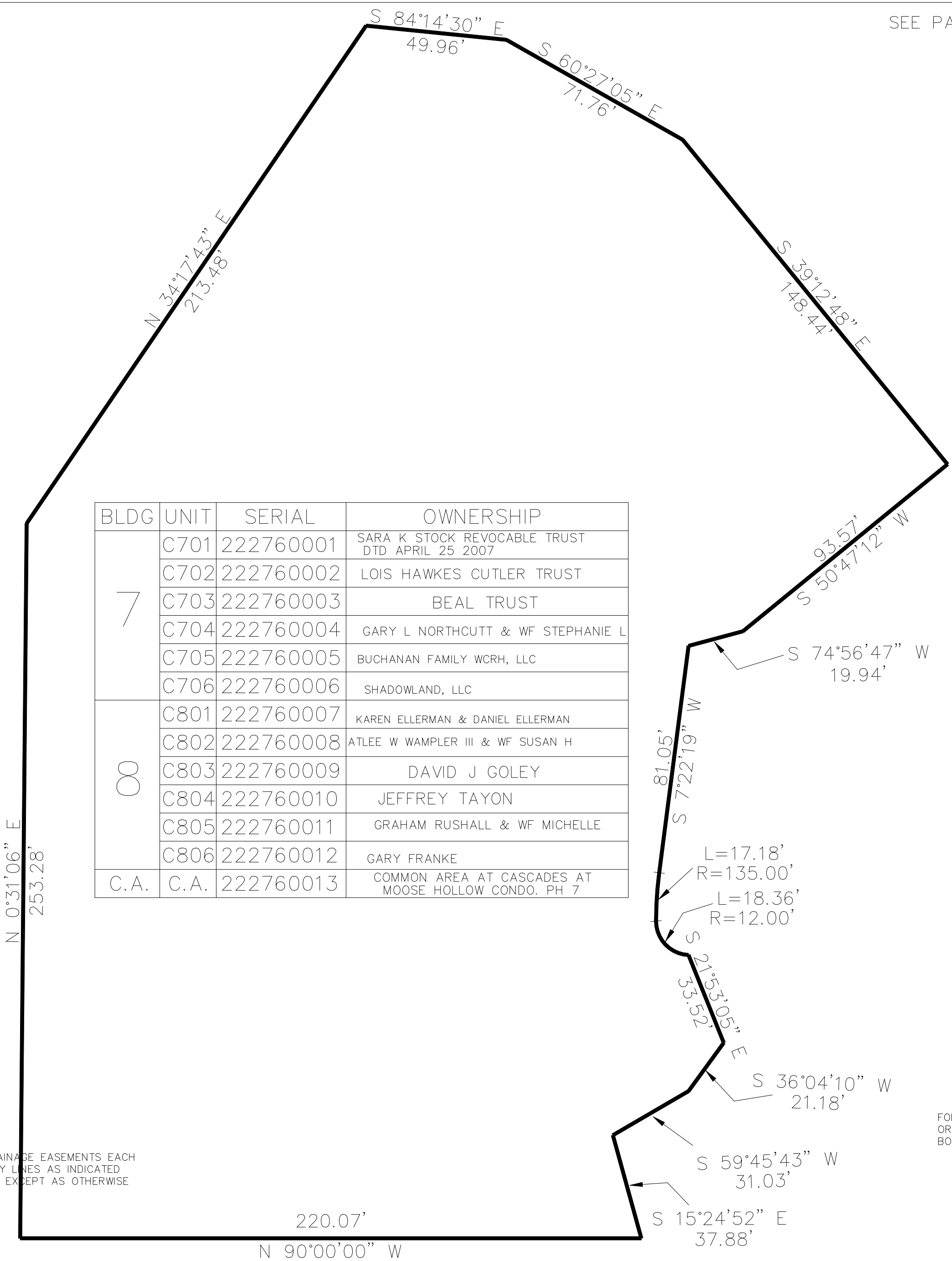
PART OF THE SE.1/4, OF SECTION 22, T.7N., R.1E., S.L.B. & M.  
**THE CASCADES AT MOOSE HOLLOW CONDOMINIUM PHASE 7**

IN WEBER COUNTY

TAXING UNIT: 203

SCALE 1" = 40'

SEE PAGE 789



BLDG	UNIT	SERIAL	OWNERSHIP
7	C701	222760001	SARA K STOCK REVOCABLE TRUST DTD APRIL 25 2007
	C702	222760002	LOIS HAWKES CUTLER TRUST
	C703	222760003	BEAL TRUST
	C704	222760004	GARY L NORTH CUTT & WF STEPHANIE L
	C705	222760005	BUCHANAN FAMILY WCRH, LLC
	C706	222760006	SHADOWLAND, LLC
00	C801	222760007	KAREN ELLERMAN & DANIEL ELLERMAN
	C802	222760008	ATLEE W WAMPLER III & WF SUSAN H
	C803	222760009	DAVID J GOLEY
	C804	222760010	JEFFREY TAYON
	C805	222760011	GRAHAM RUSHALL & WF MICHELLE
	C806	222760012	GARY FRANKE
C.A.	C.A.	222760013	COMMON AREA AT CASCADES AT MOOSE HOLLOW CONDO. PH 7

10' UTILITY & DRAINAGE EASEMENTS EACH  
 SIDE OF PROPERTY LINES AS INDICATED  
 BY DASHED LINES EXCEPT AS OTHERWISE  
 SHOWN.

FOR COMPLETE ENG DATA SEE  
 ORIGINAL DEDICATION PLAT IN  
 BOOK 67, PAGE 1-3 OF RECORDS.